



Cable ID: CAT5E-90M

Test Limit: TIA Cat 5e Channel

Limits Version: V7.5

Date / Time: 2020/10/18 16:21:25

Operator: IRANFLUKE

Headroom 11.3 dB (NEXT 1,2-7,8)

Cable Type: Cat 5e U/UTP

NVP: 69.0%

Main: Versiv

S/N: 1719045

Software Version: V6.5 Build 5

Calibration Date: 2020/08/17

Adapter: DSX-8000 (DSX-CHA804)

S/N: 1712728

Remote: Versiv

S/N: 1719046

Software Version: V6.5 Build 5

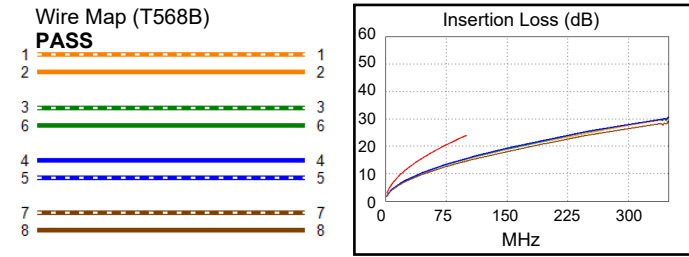
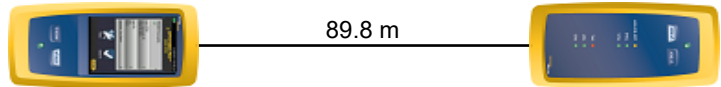
Calibration Date: 2020/08/17

Adapter: DSX-8000R (DSX-CHA804)

S/N: 1712072

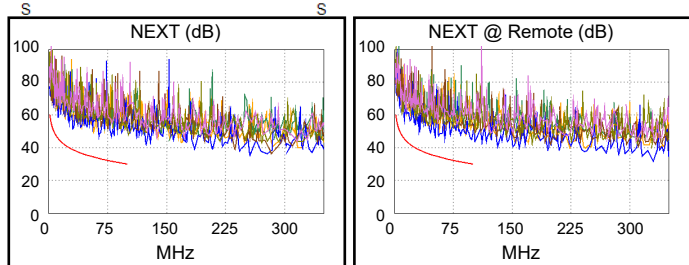
Test Summary: PASS

Length (m), Limit 100.0	[Pair 7,8]	89.8
Prop. Delay (ns), Limit 555	[Pair 4,5]	450
Delay Skew (ns), Limit 50	[Pair 4,5]	16
Resistance (ohms)	[Pair 4,5]	15.69
Insertion Loss Margin (dB)	[Pair 4,5]	8.5
Frequency (MHz)	[Pair 4,5]	100.0
Limit (dB)	[Pair 4,5]	24.0

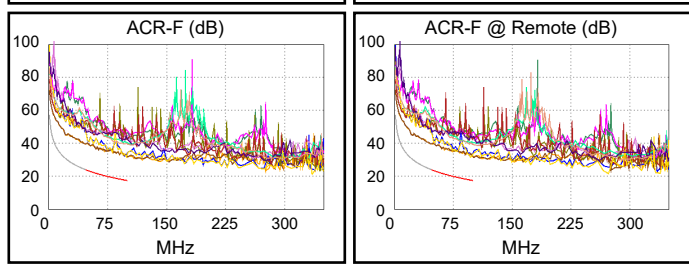


Worst Case Margin Worst Case Value

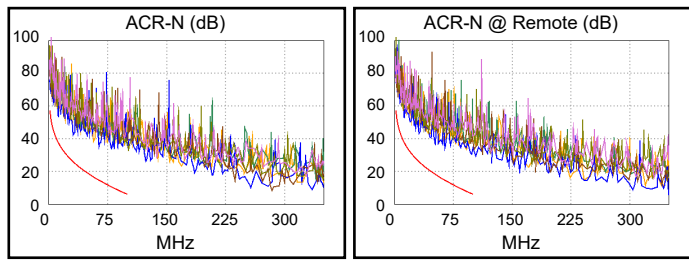
PASS	MAIN	SR	MAIN	SR
Worst Pair	1,2-7,8	1,2-7,8	1,2-7,8	1,2-7,8
NEXT (dB)	11.6	11.3	15.2	14.9
Freq. (MHz)	31.1	12.3	80.0	99.0
Limit (dB)	38.7	45.5	31.7	30.2
Worst Pair	1,2	7,8	1,2	1,2
PS NEXT (dB)	14.1	13.9	17.0	16.7
Freq. (MHz)	31.3	12.3	82.5	97.8
Limit (dB)	35.7	42.5	28.5	27.2



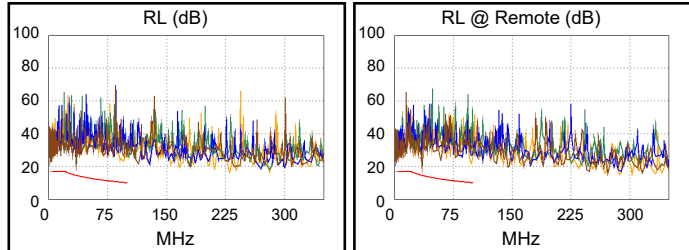
PASS	MAIN	SR	MAIN	SR
Worst Pair	1,2-3,6	7,8-1,2	1,2-3,6	3,6-1,2
ACR-F (dB)	13.8	13.8	13.8	14.0
Freq. (MHz)	100.0	97.0	100.0	100.0
Limit (dB)	17.4	17.7	17.4	17.4
Worst Pair	1,2	1,2	1,2	1,2
PS ACR-F (dB)	14.6	14.6	14.6	14.9
Freq. (MHz)	98.8	96.8	98.8	100.0
Limit (dB)	14.5	14.7	14.5	14.4



N/A	MAIN	SR	MAIN	SR
Worst Pair	1,2-7,8	1,2-7,8	1,2-7,8	1,2-7,8
ACR-N (dB)	14.6	14.2	26.5	24.3
Freq. (MHz)	2.4	12.3	93.5	99.0
Limit (dB)	53.8	37.6	7.4	6.3
Worst Pair	7,8	1,2	1,2	1,2
PS ACR-N (dB)	16.9	16.6	24.8	25.3
Freq. (MHz)	2.3	12.1	82.5	97.8
Limit (dB)	51.3	34.8	6.9	3.5



PASS	MAIN	SR	MAIN	SR
Worst Pair	7,8	7,8	7,8	7,8
RL (dB)	5.4	4.7	5.4	4.7
Freq. (MHz)	35.3	35.3	35.3	35.3
Limit (dB)	14.5	14.5	14.5	14.5



Compliant Network Standards:
 10BASE-T 100BASE-TX 100BASE-T4
 1000BASE-T 2.5GBASE-T ATM-25
 ATM-51 ATM-155 100VG-AnyLan
 TR-4 TR-16 Active TR-16 Passive