



Cable ID: CAT5E-FTP-CHA-90M

Date / Time: 06/30/2020 02:48:54 PM

Headroom 3.1 dB (NEXT 12-78)

Test Limit: TIA Cat 5e Channel

Cable Type: Cat 5e F/UTP

NVP: 69.0%

Operator: IRANFLUKE

Software Version: 2.7800

Limits Version: 1.9500

Test Summary: PASS

Model: DTX-1800

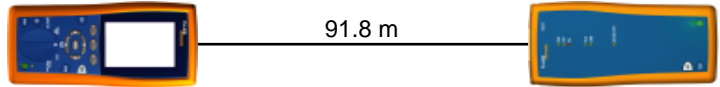
Main S/N: 9206015

Remote S/N: 9206016

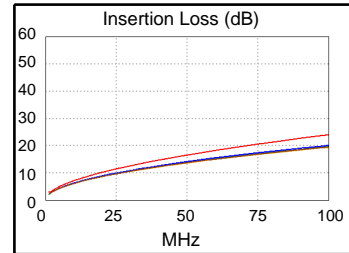
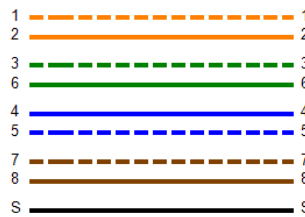
Main Adapter: DTX-CHA001

Remote Adapter: DTX-CHA001

Length (m), Limit 100.0	[Pair 78]	91.8
Prop. Delay (ns), Limit 555	[Pair 45]	462
Delay Skew (ns), Limit 50	[Pair 45]	18
Resistance (ohms)	[Pair 12]	20.4
Insertion Loss Margin (dB)	[Pair 45]	3.9
Frequency (MHz)	[Pair 45]	100.0
Limit (dB)	[Pair 45]	24.0

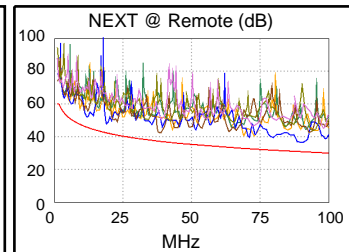
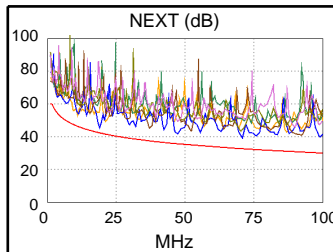


Wire Map (T568B)
PASS

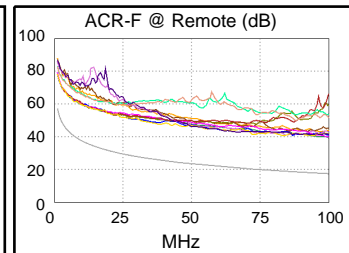
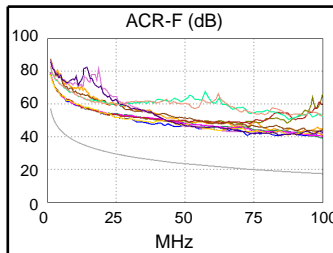


Worst Case Margin Worst Case Value

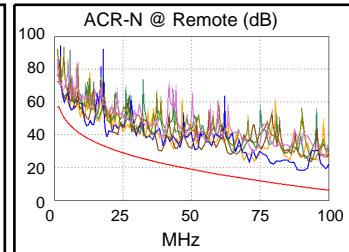
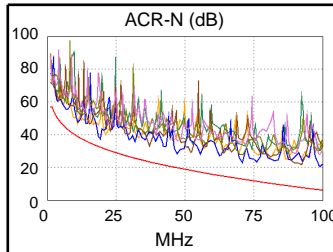
PASS	MAIN	SR	MAIN	SR
Worst Pair	12-78	36-45	12-78	12-78
NEXT (dB)	3.1	4.9	6.5	5.6
Freq. (MHz)	18.9	38.0	70.8	90.0
Limit (dB)	42.4	37.3	32.7	30.9
Worst Pair	12	36	78	12
PS NEXT (dB)	5.6	7.3	8.0	7.9
Freq. (MHz)	18.9	38.3	70.5	90.3
Limit (dB)	39.4	34.2	29.7	27.8



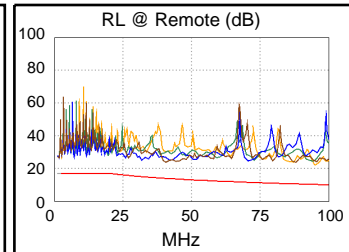
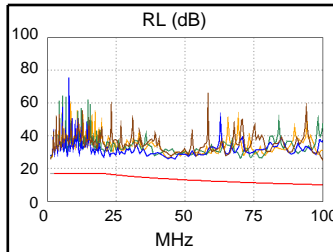
PASS	MAIN	SR	MAIN	SR
Worst Pair	12-78	78-12	12-45	12-45
ACR-F (dB)	20.5	20.7	21.7	22.0
Freq. (MHz)	72.8	72.8	100.0	100.0
Limit (dB)	20.2	20.2	17.4	17.4
Worst Pair	12	45	12	12
PS ACR-F (dB)	20.7	20.6	22.3	21.9
Freq. (MHz)	2.8	1.0	100.0	100.0
Limit (dB)	45.6	54.4	14.4	14.4



N/A	MAIN	SR	MAIN	SR
Worst Pair	12-78	12-78	12-78	12-78
ACR-N (dB)	4.6	6.6	14.2	9.9
Freq. (MHz)	18.9	19.0	99.0	90.3
Limit (dB)	32.5	32.4	6.3	8.1
Worst Pair	12	12	78	12
PS ACR-N (dB)	7.1	9.0	16.2	12.2
Freq. (MHz)	18.9	19.0	99.0	90.3
Limit (dB)	29.5	29.4	3.3	5.1



PASS	MAIN	SR	MAIN	SR
Worst Pair	45	78	78	12
RL (dB)	10.1	9.6	15.0	11.9
Freq. (MHz)	20.4	40.8	100.0	95.0
Limit (dB)	16.9	13.9	10.0	10.2



Compliant Network Standards:

10BASE-T	100BASE-TX	100BASE-T4
1000BASE-T	ATM-25	ATM-51
ATM-155	100VG-AnyLan	TR-4
TR-16 Active	TR-16 Passive	